



# JEMA in brief

[www.jema-net.or.jp/English/](http://www.jema-net.or.jp/English/)

September 2025



電機工業会館



# What is JEMA?

The Japan Electrical Manufacturers' Association (JEMA) is an industrial association, consisting of the companies and business associations which are involved in Japanese electrical machinery industry ranging from the supply side of the power such as power generation and transmission infrastructure equipment to its demand side such as industrial system equipment and home electrical appliances. One year after its establishment in 1948, JEMA took over the mission of, by merging and amalgamating, the “Japan Electrical Machinery Manufacturers’ Association,” which had descended from an information exchange group of electrical machinery manufacturers. In 1954, JEMA was authorized as an incorporated association, and in 2011 it has shifted to a general incorporated association under a new legislation.

## JEMA's Identity



### Harmony between People, Society and Technology

- 1) Development of the Member Companies
- 2) Promotion of International Cooperation
- 3) Development and Application of New Technologies

The three principles are symbolized by the three horizontal lines of the 'E' in ELECTRIC, representing their development within a circle that signifies the Earth. This growth is illustrated with a curve that evokes an upward air current. Additionally, the three lines represent the key elements: people, society, and technology.  
(Established in 1988)

Why

### Mission

To develop and proceed the manufacturing industry of electrical machinery and appliances, motors for power generation and nuclear equipment, which contribute to prosperity of economy and improvement of quality of life in Japan.  
【Source: Article 3 of the Articles of Association】

What

### Vision

To contribute to sustainable development in order to

- Strengthen international competitiveness of the Japanese electrical machinery manufacturing industry, and
- Improve and upgrade social and livelihood infrastructure

【Source: JEMA Vision】

How

### Value

- I To promote Green Transformation(GX)in order to achieve both carbon neutrality and a stable energy supply
- II To create new values with next-gen technologies and innovation
- III To establish recycling-oriented and sustainable society

## History

- |      |   |
|------|---|
| 1936 | An information exchange group of electrical machinery manufacturers reformed to a technology association  |
| 1940 | The technology association renamed as the “Japan Electrical Machinery Manufacturers’ Association.”  |
| 1948 | The “Japan Electrical Manufacturers’ Association (JEMA)” established as a group in accordance with the former Trade Association Act (now part of the Antitrust Law)<br>(The Head Office was in the “Nippon Electric Association Building” in Yuraku-cho, Chiyoda-ku, Tokyo) |
| 1949 | The “Japan Electrical Manufacturers’ Association” merged, amalgamated and took over all missions of the “Japan Electrical Machinery Manufacturers’ Association.”  |

- |      |   |
|------|---|
| 1954 | JEMA had been authorized as an incorporated association.  |
| 1955 | The Head Office moved to the “JEMA building”in Nagata-cho, Chiyoda-ku, Tokyo.                       |
| 2004 | The current “JEMA building”(Ichiban-cho, Chiyoda-ku, Tokyo) completed and the Head Office moved in. |
| 2011 | JEMA shifted to a general incorporated association for a new start.                                 |
| 2020 | JEMA implemented a wide structural change of the departments.                                       |

# I Areas of Business

## Leadership



### Planning and promotion of the sustainable development strategy in the electrical machinery industry

JEMA identifies relevant issues, such as formulating environmental assessment standards for upvaluing business operations, develops policy measures therefor, and implements them towards sustainable development of Japan's electrical machinery industry by contributing to building/enhancement of power/social infrastructures, industrial systems and QOL (Quality of Life) improvement of the people in Japan and overseas countries.



### Delivery of comments and proposals to the government policies

JEMA delivers productive comments and proposals proactively to the government policy organs and administrative bodies, concerning important policy issues including those for energy and environmental policies, stable power supply, product safety and recycling initiatives.



### Promotion of enlightening activities in handling electrical products

JEMA conducts enlightening activities for consumers, users and construction workers, activities for ensuring product safety, and promotes preventive measures against product accidents. JEMA also delivers recommendations and collaborative contribution to the government systems related to ensuring product safety.



### Promotion of statistics collection/analysis and market survey

JEMA collects and compiles relevant statistical data concerning production, shipment, exports/imports, sales of power equipment and home electrical appliances, renewable energy sources and nuclear power industry, based on the government production statistics, trade statistics and the JEMA voluntary statistics. JEMA also conducts extensive surveys in the Japanese and global markets.



### Publicity activities

JEMA conducts extensive information dissemination and public relation activities through its journal "DENKI," various publications, JEMA websites, and other media, encompassing statistical data of production, shipment, sales and others of electrical equipment, dissemination of product and safety information, release of energy and environment related issues, and various business reports.



## Innovation



### Contribution and support to state-level technological R&D activities

JEMA contributes to, by participating in, the state-level technological R&D programs for the stable energy security, energy saving, global environmental preservation and others, while monitoring and analyzing the trend of technological development in Japan and other countries and disseminating the information as appropriate.



### Promotion of upgrading the national stable energy supply and utilization

JEMA is collaborating in the promotion of establishing the highly reliable energy supply systems based on "Safety" + "Stable Supply," "Economy," and "Environmental Conformity." On the energy demand side, JEMA is contributing to energy saving by developing energy efficient products, and also disseminating energy managing and optimizing systems for energy consumption.



### Contribution to the global environmental preservation

JEMA promotes the implementation of the Action Plan to Carbon Neutrality formation of a circulation society, measures to respond to the regulations on chemical substances, as well as voluntary activities for reducing environmental burdens for biodiversity conservation.



### Promotion of creating advanced manufacturing and service industry

As an industrial group promoting Society 5.0, Industrie 4.0 or IoT (Internet of Things), JEMA contributes to the realization of an industrialized society, in which new added-values can be created by connecting products and technologies, e.g., distributed energy resources management system (DERMS).



### Developing and securing human resources

JEMA engages itself with human resource development activities for securing human resources who will bear responsibilities for the electrical machinery industry in the generations to come: interest raising in science in educational fronts (science seminars for primary school teachers); or programs to introduce attractiveness and future prospects of the electrical machinery industry to science and engineering students.



### A leading-edge technology fair IIFES

JEMA arranges the IIFES (Innovative Industry Fair for E x E Solutions, former SCF/Mechanism and Control Show Tokyo), a leading-edge technologies general exhibition for automation and measurement, in collaboration with NECA (Nippon Electric Control Equipment Industries Association) and JEMIMA (Japan Electric Measuring Instruments Manufacturers' Association).



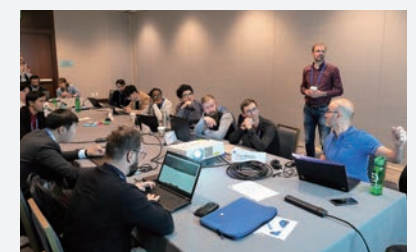
IIFES website

## Globalization



### Promotion of international standardization and conformity assessment

JEMA contributes to the improvement of qualities and technologies of electrical equipment and the realization of new systems and services by enacting and operating the JEMA standards (JEM) and also by involvement in the Japanese standardization (JIS), the international standardization (IEC, ISO), and other activities. JEMA is also engaged in establishing internationally harmonized conformity assessment such as the product certification system and in promoting its practice. JEMA's another mission is to develop human resources for strategically promoting international standardization.



### International exchange

JEMA is energetically involved in the activities of FAEMA and IRHMA: the FAEMA (Federation of Asian Electrical Manufacturers' Association) comprises six industrial associations of power and electrical machinery manufacturers in the Asian and Pacific region, while the IRHMA (International Roundtable of Household Appliance Manufacturer Associations) provides a platform to exchange information and opinions among industrial associations for the home electrical appliances.



### Coordination in trade issues

JEMA works closely with the government for the establishment of Economic Partnership Agreements such as the FTA, EPA, RCEP as well as the WTO trade agreements (EGA, ITA and others), by integrating the opinions of the industrial sector. JEMA is also addressing various trade issues.



# Range of products

## Power and Industrial System Equipment

### Boilers and turbines for power generation

Boilers, Steam turbines, Gas turbines, Water turbines, etc.

### Motors and generators

AC generators, DC motors, AC motors, Servo motors, Small motors, Linear motors, etc.

### Motor-driven devices

Electric tools, Electric hoists, Electric blowers, etc.

### Stationary electrical machines

Transformers, Power converters, Inverters, Uninterruptible power systems, Electric welders, Electric furnaces, Reactors, Capacitors, Surge arresters, fast charger and bidirectional charger for EVs, etc.

### Switchgears & switchgear control systems

Gas insulated switchgears, Metal-enclosed switchgears, Distribution boards, Remote supervisory control equipment, Low voltage switchgears and controlgears, Programmable controllers, High voltage switches, Low voltage circuit breakers, High voltage circuit breakers, Protective relays, Electromagnetic clutches, etc

## Nuclear Power Plant and Equipment

### Nuclear power plants

(including next-gen innovative nuclear reactors, nuclear- and its related facilities including nuclear fuel cycle installations) Accelerator systems

## New and Renewable Energy Generation System and Equipment

### Solar photovoltaic power generation systems

Wind energy generation systems Fuel cell power systems, etc.

Member Products List



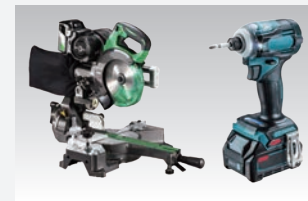
High efficiency gas turbine



Remote supervisory controller for electric power system control station



Premium efficiency motor (Top runner motor) Servo motor



Electric tools



High efficiency transformer (Top runner transformer) Left:Oil-immersed type Right:Molded type



Inverter for general purpose



550kV gas insulated switchgear



Programmable controller



Nuclear power plant (Sendai Nuclear Power Station)



Wind energy generation system (Photo thanks to Green Power Investment Corporation)



Photovoltaic power generation system (Shiga, Yabasekihantou mega solar power plant)



Power conditioning system



Fuel cell system

## Home Electrical Appliances

### Living environment and cooling / heating related equipment

Room air conditioners, Vacuum cleaners, Ventilating fans, Bathroom dryer fan, Fans, Air purifiers, Electric space heaters, Electric hot heating fans, Carpet-type heaters, Humidifiers, Water storage heaters, Toilet seats with washers or seat heats, Well pumps, Small pumps, Dehumidifiers, etc.



Room air conditioner



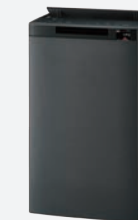
Vacuum cleaner



Bathroom dryer fan



Fan



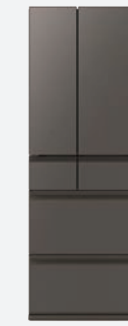
Air purifier



Electric stove

### Kitchen devices

Refrigerators, Freezers, Microwave ovens, Rice cookers, IH cooking heaters, Combined juicers and blenders, Electric pots, Coffee makers, Toasters, Dishwashers, Bread machines, Electric griddles, Home raw garbage processing equipment, etc.



Refrigerator



Microwave oven



Rice cooker & warmer



Freezer



IH cooking heater



Electric Pot



Toaster



Dishwasher

### Home laundry equipment

Washing machines, Clothes dryers, Futon dryers, Irons, etc.



Washer & dryer



\* Image of the menu of microwave oven App  
Connected / Smart home appliance (ex. microwave oven)  
\* Room air conditioners, refrigerators, washing machines, rice cookers etc can be also connected to the Internet.

### Electrical personal appliances

Shavers, Hair clippers, Massagers, Depilators, Electric toothbrushes, Hair dryers, etc.

### Connected / Smart home appliances



Electric toothbrush



Shaver




Hair dryer

## Board of Directors

Chairman

Kei URUMA

Mitsubishi Electric Corporation  
Representative Executive Officer  
President & CEO



Chairman  
Kei URUMA

Executive Vice Chairman

Yuki KUSUMI

Panasonic Holdings Corporation  
Representative Director/President,  
Group CEO

President

Tetsuya NAKAJIMA

Senior Vice President

Masaaki YAZA

Directors

Hiddenori GOTO

Nishishiba Electric Co.,Ltd. Director, President and CEO

Shinichi HIRANO

SINFONIA TECHNOLOGY CO., LTD. President

Kotaro ICHINOSE

Makita Corporation Corporate Officer

Takashi ICHINOSE

TAKAOKA TOKO CO., LTD. President

Yasunori INADA

Hitachi, Ltd. Vice President and Executive Officer, CEO of Nuclear Energy Business Unit

Atsushi ITAGAKI

FUJITSU GENERAL LIMITED Senior Executive Officer

Hiroshi KANETA

Toshiba Corporation General Executive

Kazuo KOBAYASHI

Aichi Electric Co., Ltd. President

Shiro KONDO

FUJIELECTRIC CO., LTD. Representative Director, Director and President, Chief Operating Officer

Takeshi MIIDA

MEIDENSHA CORPORATION Representative Director, Chairperson and Senior Officer

Katsuhiko MORI

NICHICON CORPORATION President

Jun NUKINA

Toyo Electric Mfg. Co., Ltd. Director, Senior Executive Officer

Hiroshi OGASAWARA

YASKAWA Electric Corporation Representative Director, Chairman of the Board

Tsuyoshi OKADO

NISSIN ELECTRIC Co., Ltd. Managing Director

Yasufumi SUGAHARA

Sharp Corporation Executive Managing Officer, Co-Chief Operating Officer

Tetsuya TAJIRI

DAIHEN Corporation Chairman

Shinichi TOGAMI

Togami Electric Mfg. Co.,Ltd. President

Shinzo YAMADA

Taiyo Electric Co.,Ltd. Chairman

Motohiro YAMANISHI

OMRON Corporation Managing Executive Officer

Tomohiko YOSHIDA

Koki Holdings Co., Ltd. Executive Officer

Auditors

Osami TSUKAMOTO

Yokohama National University Professor Emeritus

Yoshihide WATANABE

Osaki Electric Co.,Ltd. Chairman and CEO

Shigeo YAMAMOTO

Sanyo Denki Co.,Ltd. Representative Director, Chairman of the Board and Chief Executive Officer

## Chairman of the Branches

(Osaka) Yasuhumi SUGAHARA

Sharp Corporation Executive Managing Officer, Co-Chief Operating Officer

(Nagoya) Takeshi YONEBAYASHI

Kawamura Electric Inc. Managing Executive Officer

(Kyushu) Kouichi SAISYO

Seibu Electric & Machinery Co., Ltd. President

## Members

Regular members

(185 Companies)

A

Aichi Electric Co.,Ltd.  
AIRMAN CORPORATION  
Aisin Corporation

B

BEMAC Corporation  
Bosch Home Comfort Japan Inc.

C

Carrier Japan Corporation

D

Daido Solderless Terminal Mfg. Co.,Ltd.  
DAIHEN Corporation  
Daikin Industries, Ltd.  
DAISHIN INDUSTRIES LTD.  
Daito Communication Apparatus Co.,Ltd.  
Danrey Kogyo Co.,Ltd.  
DenGX Co., Ltd.  
DENSO Corporation  
Denyo Co.,Ltd.  
DIAMOND & ZEBRA ELECTRIC MFG. CO., LTD.

E

ELIY Power Co.,Ltd.  
Energy Support Corporation  
Energywith Co., Ltd.

F

Fuji Electric Co.,Ltd.  
Fuji Electric FA Components & Systems Co.,Ltd.  
Fuji Grinding Wheel Mfg.Co.,Ltd.  
Fuji Logistics Co.,Ltd.  
Fuji Terminal Industry Co.,Ltd.  
Fujitsu General Limited.

G

GBP K.K.  
GS Yuasa International Ltd.  
GS Yuasa Technology Ltd.

H

Haier Asia R&D Co., Ltd.  
Hikari Trading Co.,Ltd.  
Hitachi, Ltd.  
Hitachi Energy Ltd.  
Hitachi GE Vernova Nuclear Energy, Ltd.  
Hitachi Global Life Solutions, Inc.  
Hitachi Industrial Equipment Systems Co.,Ltd.  
Hitachi Industrial Products, Ltd.  
Hitachi Plant Construction, Ltd.  
Hitachi Power Solutions Co.,Ltd.  
Hokuriku Electric Co.,Ltd.  
Honda Motor Co., Ltd.

I

ICHIKAWA CO., LTD.  
IHI Corporation  
IRIS OHYAMA INC.  
ITOH DENKI CO., LTD.

J

Japan Switch board & Control System Industries Association  
JRCS Mfg. Co., Ltd.  
J.S.T.Mfg. Co.,Ltd.

K

Kamiuchi Electric Works, Ltd.  
Kanadevia Corporation  
Kaneka Corporation  
Kansai Denki Kogyokai  
Katsumata Electric Works Co.,Ltd.  
Kawaden Corporation  
KAWAHIRA Electric Co., Ltd.  
Kawamura Electric Inc.  
Kawasaki Heavy Industries, Ltd.  
K.C.C. Shokai, Limited  
Kitani Electric Company Limited  
Kitashiba Electric Co.,Ltd.  
Kito Corporation  
KODEN CO., LTD.  
Koizumi Seiki Corporation

K

Koki Holdings Co.,Ltd.  
KOMAIHALTECH Inc.  
Komatsu, Ltd.  
Kuwahata Electric Mfg. Co.,Ltd.  
Kyocera Corporation  
KYOCERA Industrial Tools Corporation  
Kyoritsu Denki Seisakusho Co., Ltd.  
Kyuden Technosystems Corporation  
KYUHEN Co.,Inc.

L

LIXIL Corporation  
LOGISTEED, Ltd.

M

Makita Corporation  
MAX CO., LTD.  
Maxell Izumi Co., Ltd.  
MEIDEN ENGINEERING CORPORATION  
Meidensha Corporation  
METAWATER Co.,Ltd.  
METRO DENKI KOGYO CO., LTD.  
Mitsubishi Electric Corporation  
Mitsubishi Electric Engineering Co.,Ltd.  
Mitsubishi Electric FA Industrial Products Corporation  
Mitsubishi Electric Home Appliance Co.,Ltd.  
Mitsubishi Electric Plant Engineering Corporation  
Mitsubishi Electric Public Utility Equipment Corporation  
Mitsubishi Electric System & Service Co.,Ltd.  
Mitsubishi Heavy Industries, Ltd.  
Mitsubishi Heavy Industries Thermal Systems, Ltd.  
Miyaki Electric Mfg. Co.,Ltd.  
Murata Manufacturing Co., Ltd.

N

NF Blossom Technologies, Inc.  
NF HOLDINGS CORPORATION  
NGK Insulators, Ltd.  
NHV Corporation  
Nichicon Corporation  
Nichicon (Kusatsu) Corporation  
Nichifu Terminal Industries Co.,Ltd.  
Nihon Itomic Co.,Ltd.  
Nikko Electric Mfg. Co., Ltd.  
Nippon Denki Co.,Ltd.  
Nippon Denki Kenkyusho Co.,Ltd.  
Nippon Hoist Co.,Ltd.  
Nippon Kernel System Co., LTD.  
Nishimu Electronics Industries Co., Ltd.  
Nishishiba Electric Co.,Ltd.  
Nissin Electric Co.,Ltd.  
NITTO Kogyo Corporation

O

Ohatsu Co.,Ltd.  
OMRON Corporation  
OMRON HEALTHCARE Co., Ltd.  
OMRON SOCIAL SOLUTIONS CO., LTD.  
Osaki Electric Co.,Ltd.  
Otowa Electric Co., Ltd.

P

Panasonic Corporation  
Panasonic Ecology Systems Co.,Ltd.  
Panasonic Entertainment & Communication Co., Ltd.  
Panasonic Environmental Systems & Engineering Co., Ltd.  
Panasonic Holdings Corporation  
Panasonic Industry Co., Ltd.  
Panasonic Operational Excellence Co., Ltd.  
Panasonic Switchgear Systems Co.,Ltd.

R

Rhythm Co., Ltd  
Rinnai Corporation  
Risho Kogyo Co.,Ltd.  
RITTAL K.K.

S

San-Eisha, Ltd.  
Sanka Kogyo Co., Ltd.  
Sansha Electric Mfg. Co.,Ltd.  
Sanso Electric Co.,Ltd.  
Sanyo Denki Co.,Ltd.  
Sawafuji Electric Co.,Ltd.  
SBS Toshiba Logistics Corporation  
SDG CO., LTD.  
Seibu Electric & Machinery Co.,Ltd.  
Seiko Electric Co.,Ltd.  
Seikosha Mfg. Co.,Ltd.  
Sengoku Works, Ltd.  
Sharp Corporation  
SHARP ENERGY SOLUTIONS CORPORATION  
SHIHEN TECHNICAL Corporation  
Shimadzu Corporation  
Shimomura Denyusha, Ltd.  
Shindengen Electric Manufacturing Co., Ltd.  
Shizuki Electric Co.,Inc.  
SINFONIA ENGINEERING CO. LTD.  
SINFONIA TECHNOLOGY CO., LTD.  
SOC Corporation  
Sumitomo Electric Industries, Ltd.  
Sumitomo Heavy Industries, Ltd.  
Suntech Power Japan Corporation

T

Taiyo Electric Co.,Ltd.  
TAKAOKA TOKO CO., LTD.  
TAKASU SANGYO, LTD.  
TAMURA CORPORATION  
Tempearl Industrial Co.,Ltd.  
Terasaki Electric Co.,Ltd.  
The Chugoku Electric Manufacturing Company, Incorporated  
The Furukawa Battery Co.,Ltd.  
The Peacock Vacuum Bottle Co.,Ltd.  
Tiger Corporation  
TMEIC Corporation  
TODA CORPORATION  
Togami Electric Mfg. Co.,Ltd.  
Tohoku Electric Mfg. Co.,Ltd.  
TOKYO DENSEI INDUSTRIAL CO., LTD.  
Tokyo Electric Industry Co.,Ltd.  
Torishima Electric Works Ltd.  
Toshiba Corporation  
Toshiba Energy Systems & Solutions Corporation  
Toshiba Home Technology Corporation  
Toshiba Industrial Products and Systems Corporation  
Toshiba Infrastructure Technology Service Co., Ltd.  
Toshiba Lifestyle Products & Services Corporation  
Toshiba Schneider Inverter Corporation  
Toshiba Unified Technologies Corporation  
TOTO Ltd.  
Toyo Electric Mfg. Co.,Ltd.  
Toyo Hoist Mfg. Co.,Ltd.

U

Utsunomiya Electric Mfg. Co.,Ltd.

W

WashiON Co., Ltd.

Y

YAMABIKO CORPORATION  
YANMAR CONSTRUCTION EQUIPMENT CO., LTD.  
Yaskawa Automation & Drives Corp.  
YASKAWA Electric Corporation

Z

Zojirushi Corporation

## Supporting members

A

AIR WATER MATERIALS INC.  
Aqua Co.,Ltd.

B

Bosch Corporation  
Bosch Rexroth Corporation

C

Canadian Solar Japan K.K.  
Chemi-Con Device Corporation  
Chiyoda Kohan Co., LTD.  
Chugai Electric Industrial Co.,Ltd.  
Cosmos Corporation

D

Daiichi Electronics Co.,Ltd.  
Daiwabo Co., Ltd.  
DELTA ELECTRONICS (JAPAN), INC.  
DELTA ENGINEERING CO, LTD.  
Denkishizai Co.,Ltd.  
Dometic K.K.  
Du Pont Specialty Products Kabushiki Kaisha  
Dyson K.K.

E

Eaton Electric (JAPAN) Ltd.  
EPLAN Software & Services K.K.  
Eternalplanet Energy Japan K.K.

F

FDK CORPORATION  
FUJI ELECTRIC ENGINEERING & CONSTRUCTION CO.LTD.  
FUJI INDUSTRIAL SALES Co.,Ltd.  
Fujitsu Limited

G

Global Nuclear Fuel-Japan Co.,Ltd.  
G-Place Corporation  
Groupe SEB Japan Co., Ltd.

H

Haier Japan Holdings Co., Ltd.  
Haier Japan Sales Co.,Ltd.  
Hanwha Japan CO., LTD.  
HARMAN Co.,Ltd.  
Hilti (Japan), Ltd.  
HISENSE JAPAN CORPORATION  
Hitachi Building Systems Co.,Ltd.  
Hitachi Industry & Control Solutions, Ltd.  
Hoei Denki Co.,Ltd.  
Huawei Technologies Japan K.K.  
Hyoda Instruments Corporation

I

ICAN COMPANY LTD.  
Inaba Denki Sangyo Co.,Ltd.

J

Jackery Japan Co.,Ltd.  
Japan Audit and Certification Organization for Environment and Quality  
Japan Copper Development Association  
Japan Marine United Corporation  
JAPAN TABACCO INC.  
JA Solar Japan Limited  
JFE Electrical Steel Co.,Ltd.  
JFE Steel Corporation  
JGC Corporation  
Jin and Marry CO., Ltd.  
Jinko Solar Holding Co., Ltd.  
JUST Co., Ltd.

K

Kanken Techno Co., Ltd.  
KEC CORPORATION  
KYODO KY-TEC CORP.

L

LG Electronics Japan Inc.  
LONGi Solar Technology K. K.

M

Midea Japan Corporation  
Miele Japan Corp.  
MITSUBISHI ELECTRIC BUILDING SOLUTIONS CO., LTD.  
MORITANI & Co.,Ltd.  
MR Japan Corporation

N

NEC Corporation  
Nestle Nespresso K.K.  
NICHIDEN Corporation  
NIPPON STEEL CORPORATION  
Nippon Tungsten Co.,Ltd.  
N.TEC Co., Ltd.

O

Ono Sokki Co., Ltd.

P

P & G Japan G.K.  
Philips Electronics Japan, Ltd.  
Proterial, Ltd.

R

RYODEN Corporation

S

Samsung R&D institute Japan Co. LTD.  
Sanshin Electric Corporation  
Sanyo Kogyo Co.,Ltd.  
Saraya Co., LTD  
Schneider Electric Japan Inc.  
Seino Holdings Co., Ltd.  
Sekisui Chemical Co.,Ltd.  
ShinFlow JAPAN Co., Ltd  
SMA Japan K.K.  
SolarEdge Technologies (Japan) Co., Ltd.  
Solax Power Network  
Sony Global Manufacturing & Operations Corporation  
SUGAHARA Co.,Ltd.  
Sungrow Japan K.K.

T

Takara Standard Co.,Ltd.  
Takigen Mfg. Co.,Ltd.  
TCL JAPAN ELECTRONICS Co., Ltd.  
TECO JAPAN Co., Ltd.  
TOKYO GAS CO.,LTD.  
TOYOTA INDUSTRIES CORPORATION  
Toyota Tsusho Corporation  
Trina Solar (JAPAN) Limited  
Tsunashima & Co., Ltd.  
TÜV Rheinland Japan Ltd.

W

WADA ELECTRICAL INSTALLATION LTD.  
Wind Energy Institute of Tokyo, Inc.

Y

Yingli Green Energy Japan Co., Ltd.  
YOSHII ELECTRIC CO., LTD.

Latest members information can be found at [www.jema-net.or.jp/English/about/members/](http://www.jema-net.or.jp/English/about/members/)



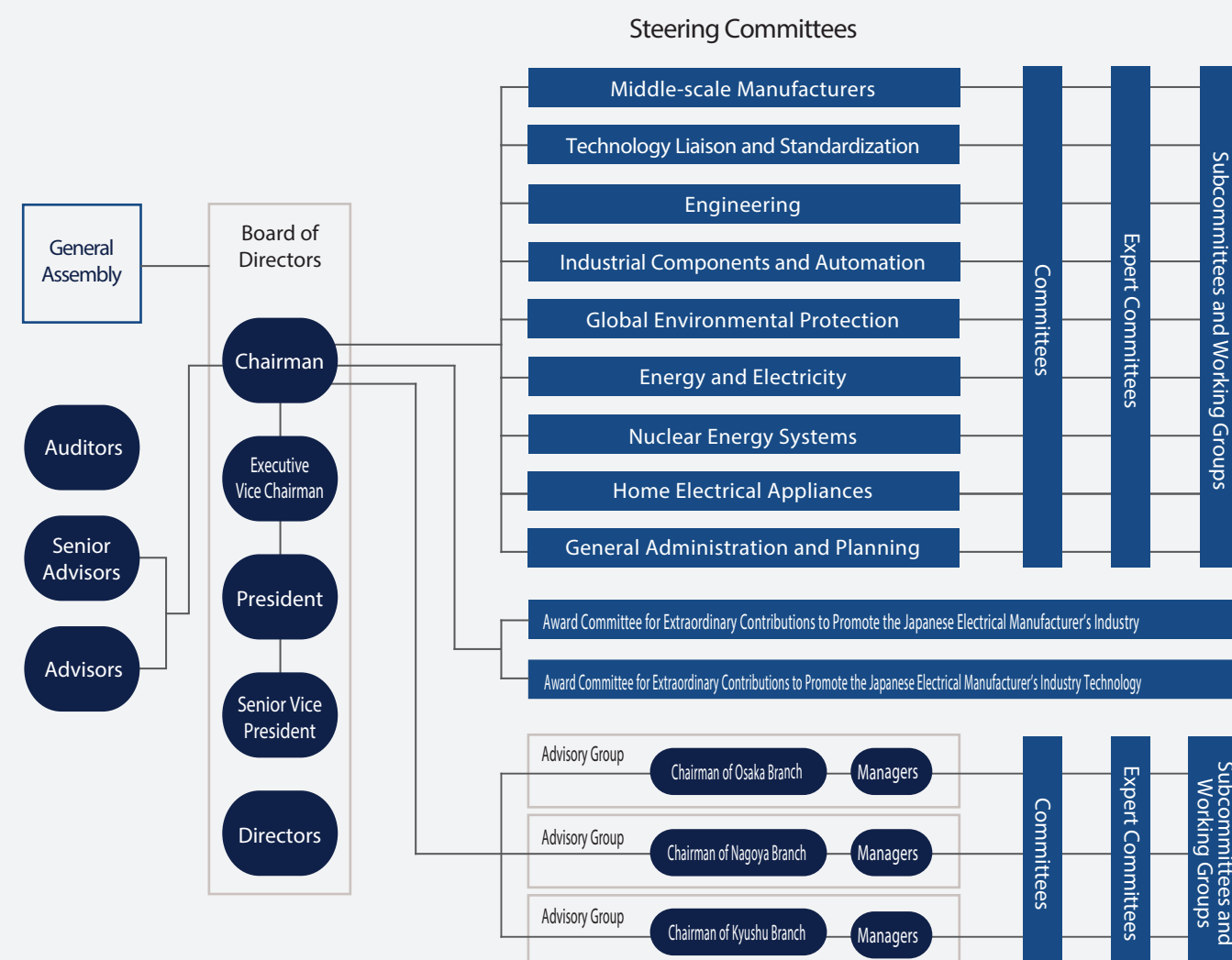


# Organization

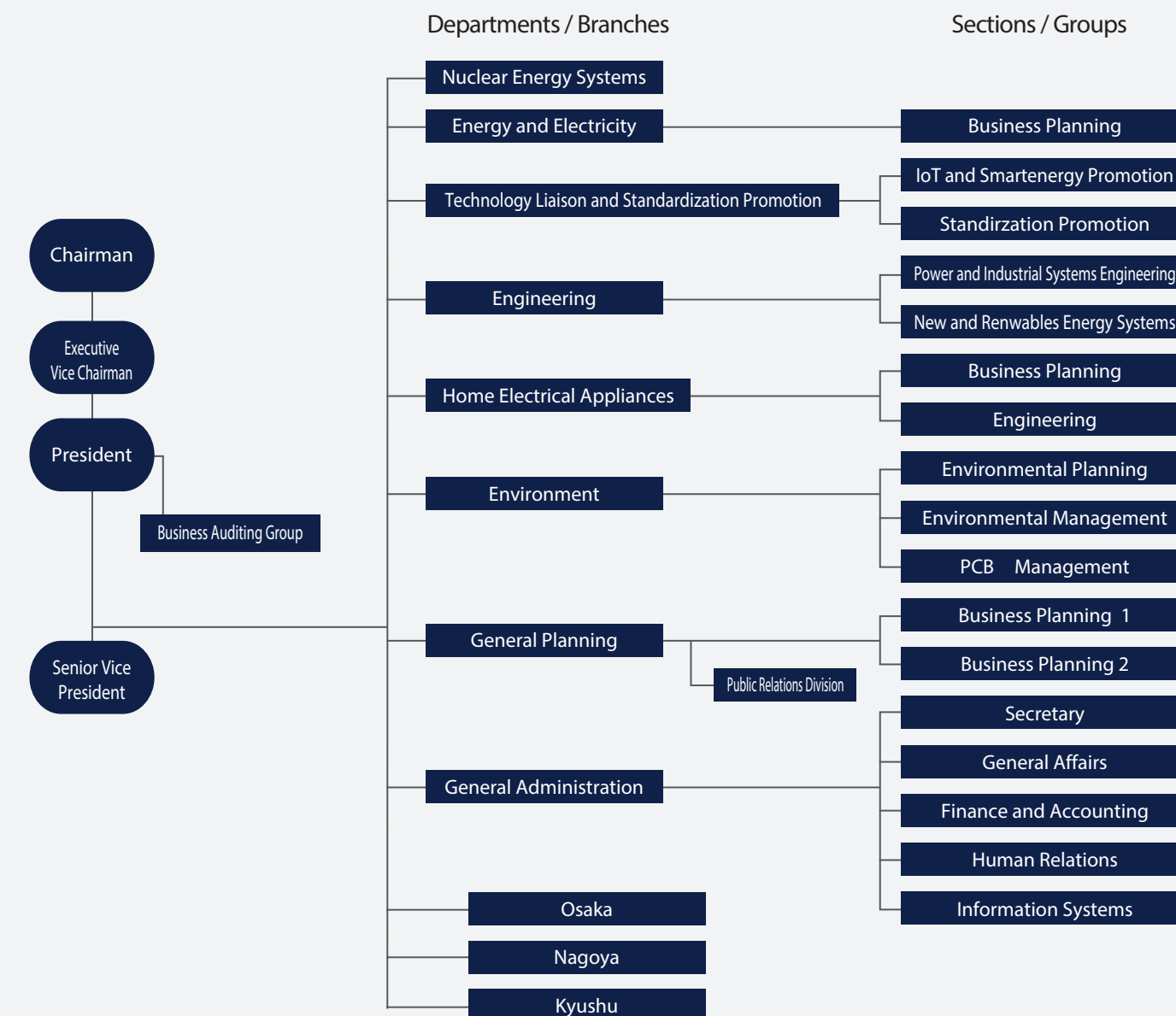
In order to conduct its business, JEMA has a wide range of committees that deal with many different fields, including the following;

- Committees related to products for heavy electrical industry, industrial systems and equipment, home electrical appliances, nuclear power and new and renewable energy sources
- Committees for areas of concern that include all industries, such as the environment and technology
- Committees for medium-sized companies and the financial aspects of corporate management

The committees are headed by steering committees, and there are various committees, expert committees, subcommittees, and working groups. Regular members can participate in committees related to the products they handle.



# JEMA Secretariat



## Head Office

17-4 Ichiban-cho Chiyoda-ku  
Tokyo 102-0082  
Phone +81-3-3556-5881 Fax +81-3-3556-5889

## Nagoya

Nagoya Shokokaigisyo Bldg. 6th Fl  
10-19 Sakae 2-chome Naka-ku  
Nagoya 460-0008  
Phone +81-52-231-5211 Fax +81-52-231-5610

## Osaka

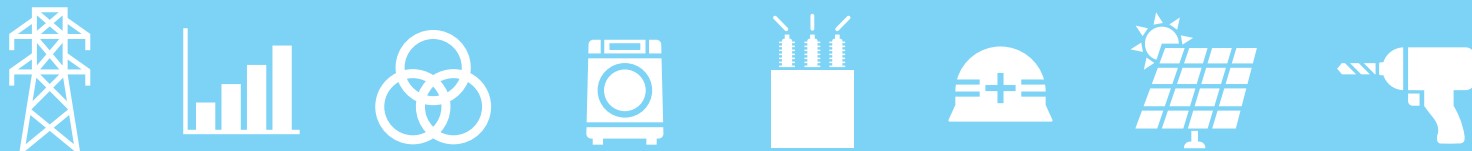
Chuo Denki Club 4th Fl  
1-25 Dojimahama 2-chome Kita-ku  
Osaka 530-0004  
Phone +81-6-6344-1061 Fax +81-6-6344-1837

## Kyushu

Denki Bldg. North 10th Fl  
1-82 Watanabedori 2-chome Chuo-ku  
Fukuoka 810-0004  
Phone +81-92-761-4778 Fax +81-92-751-2094



Access Map



# Joining JEMA

## Categories of Membership

### Regular Membership

A corporate entity involved in the manufacture and/or relevant businesses of electrical machinery and/or equipment in Japan, or an entity or organization consisting of these.

### Supporting Membership

An entity or organization that does not qualify for regular membership but agrees with the goals of JEMA and will cooperate with JEMA projects.

## Membership Privileges

### Participation in JEMA committees (Regular membership only)

Regular members can participate in committees related to the products they handle.

### Acquisition of the latest information on the Japanese electrical industry through

- IIFES (an every-other-year organized international exhibition for FA related control technology and equipment),
- JEMA lectures, seminars, and industry exchange meetings,
- Information from governmental agencies,
- JEM standards, technical reports, JEMA statistics with membership prices
- JEMA bulletin DENKI and JEMA annual report,
- Access to members-only portal

# Access to Head Office

- Tokyo Metro Hanzomon Line  
Hanzomon station (Z05) Exit 4  
3 minutes walk
- Tokyo Metro Yurakucho Line  
Kojimachi station (Y15) Exit 3  
7 minutes walk



© The Japan Electrical Manufacturers' Association.

