

Overview of JEMA

THE JAPAN ELECTRICAL MANUFACTURERS' ASSOCIATION





What is JEMA?

The Japan Electrical Manufacturers' Association (JEMA) is an industrial association, consisting of the companies and business associations which are involved in Japanese electrical machinery industry ranging from the supply side of the power such as power generation and transmission infrastructure equipment to its demand side such as industrial system equipment and home electrical appliances.

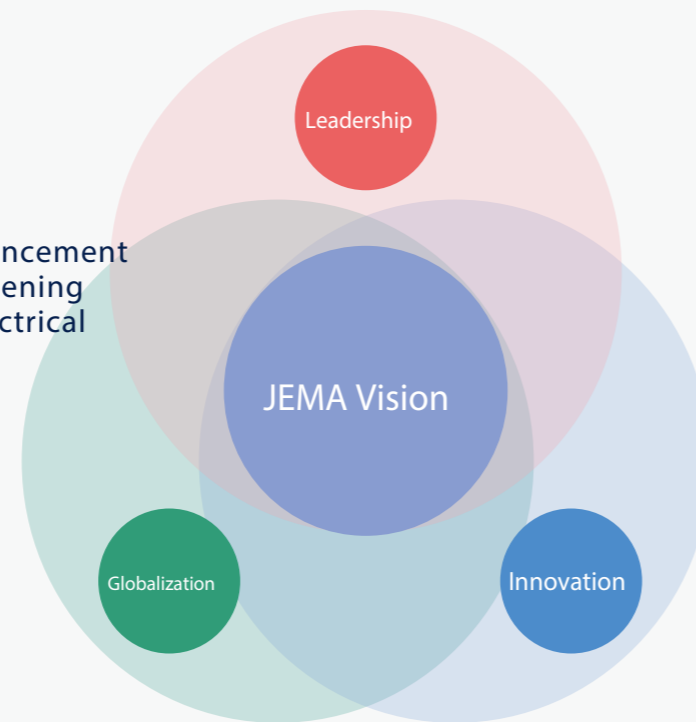
One year after its establishment in 1948, JEMA took over the mission of, by merging and amalgamating, the "Japan Electrical Machinery Manufacturers' Association," which had descended from an information exchange group of electrical machinery manufacturers.

In 1954, JEMA was authorized as an incorporated association, and in 2011 it has shifted to a general incorporated association under a new legislation.

JEMA Vision

JEMA will contribute to sustainable global development through improvement and enhancement of social and living infrastructures by strengthening international competitiveness of Japanese electrical machinery equipment industry.

With this vision in mind and from the three key viewpoints of Leadership, Innovation and Globalization, JEMA will provide further development and problem solutions to the Japanese electric machinery industry by fulfilling its mission and role.



Priority Issues in FY2023

- Aiming to Contribute to Carbon Neutrality by 2050 -

1

Towards sustainable society through promotion of energy and environmental strategies

- Proposal for realizing the carbon-free society
- Promotion of further electrification
- Formulation of environmental assessment standards for higher business values

2

Creation of new markets through next generation technologies and innovation

- Development of low- and decarbonization technologies
- Creation of new service models based on digital technologies

3

Intensification of technological infrastructures and promotion of international standardization toward global market expansion

- Establishment of strategic rules that match innovation
- Strengthening economic security

History

- 1936 An information exchange group of electrical machinery manufacturers reformed to a technology association
- 1940 The technology association renamed as the "Japan Electrical Machinery Manufacturers' Association."
- 1948 The "Japan Electrical Manufacturers' Association (JEMA)" established as a group in accordance with the former Trade Association Act (now part of the Antitrust Law) (The Head Office was in the "Nippon Electric Association Building" in Yuraku-cho, Chiyoda-ku, Tokyo)
- 1949 The "Japan Electrical Manufacturers' Association" merged, amalgamated and took over all missions of the "Japan Electrical Machinery Manufacturers' Association."

- 1954 JEMA had been authorized as an incorporated association.
- 1955 The Head Office moved to the "JEMA building" in Nagata-cho, Chiyoda-ku, Tokyo.
- 2004 The current "JEMA building" (Ichiban-cho, Chiyoda-ku, Tokyo) completed and the Head Office moved in.
- 2011 JEMA shifted to a general incorporated association for a new start.
- 2020 JEMA implemented a wide structural change of the departments.

Areas of Business

Leadership



Planning and promotion of the sustainable development strategy in the electrical machinery industry

JEMA identifies relevant issues, such as formulating environmental assessment standards for upvaluing business operations, develops policy measures therefor, and implements them towards sustainable development of Japan's electrical machinery industry by contributing to building/enhancement of power/social infrastructures, industrial systems and QOL (Quality of Life) improvement of the people in Japan and oversea countries.



Delivery of comments and proposals to the government policies

JEMA delivers productive comments and proposals proactively to the government policy organs and administrative bodies, concerning important policy issues including those for energy and environmental policies, stable power supply, product safety and recycling initiatives.



Promotion of enlightening activities in handling electrical products

JEMA conducts enlightening activities for consumers, users and construction workers, activities for ensuring product safety, and promotes preventive measures against product accidents. JEMA also delivers recommendations and collaborative contribution to the government systems related to ensuring product safety.



Promotion of statistics collection/analysis and market survey

JEMA collects and compiles relevant statistical data concerning production, shipment, exports/imports, sales of power equipment and home electrical appliances, renewable energy sources and nuclear power industry, based on the government production statistics, trade statistics and the JEMA voluntary statistics. JEMA also conducts extensive surveys in the Japanese and global markets.



Publicity activities

JEMA conducts extensive information dissemination and public relation activities through its journal "DENKI," various publications, JEMA websites, and other media, encompassing statistical data of production, shipment, sales and others of electrical equipment, dissemination of product and safety information, release of energy and environment related issues, and various business reports.



DENKI pdf download page (in Japanese)

Innovation



Contribution and support to state-level technological R&D activities

JEMA contributes to, by participating in, the state-level technological R&D programs for the stable energy security, energy saving, global environmental preservation and others, while monitoring and analyzing the trend of technological development in Japan and other countries and disseminating the information as appropriate.



Promotion of upgrading the national stable energy supply and utilization

JEMA is collaborating in the promotion of establishing the highly reliable energy supply systems based on "Safety" + "Stable Supply," "Economy," and "Environmental Conformity." On the energy demand side, JEMA is contributing to energy saving by developing energy efficient products, and also disseminating energy managing and optimizing systems for energy consumption.



Contribution to the global environmental preservation

JEMA promotes the implementation of the Action Plan to Carbon Neutrality formation of a circulation society, measures to respond to the regulations on chemical substances, as well as voluntary activities for reducing environmental burdens for biodiversity conservation.



Promotion of creating advanced manufacturing and service industry

As an industrial group promoting Society 5.0, Industrie 4.0 or IoT (Internet of Things), JEMA contributes to the realization of an industrialized society, in which new added-values can be created by connecting products and technologies, e.g., distributed energy resources management system (DERMS).



Developing and securing human resources

JEMA engages itself with human resource development activities for securing human resources who will bear responsibilities for the electrical machinery industry in the generations to come: interest raising in science in educational fronts (science seminars for primary school teachers); or programs to introduce attractiveness and future prospects of the electrical machinery industry to science and engineering students.



A leading-edge technology fair IIFES

JEMA arranges the IIFES (Innovative Industry Fair for E x E Solutions, former SCF/Measurement and Control Show Tokyo), a leading-edge technologies general exhibition for automation and measurement, in collaboration with NECA (Nippon Electric Control Equipment Industries Association) and JEMIMA (Japan Electric Measuring Instruments Manufacturers' Association).



IIFES website

Globalization



Promotion of international standardization and conformity assessment

JEMA contributes to the improvement of qualities and technologies of electrical equipment and the realization of new systems and services by enacting and operating the JEMA standards (JEM) and also by involvement in the Japanese standardization (JIS), the international standardization (IEC, ISO), and other activities. JEMA is also engaged in establishing internationally harmonized conformity assessment such as the product certification system and in promoting its practice. JEMA's another mission is to develop human resources for strategically promoting international standardization.



International exchange

JEMA is energetically involved in the activities of FAEMA and IRHMA: the FAEMA (Federation of Asian Electrical Manufacturers' Association) comprises six industrial associations of power and electrical machinery manufactures in the Asian and Pacific region, while the IRHMA (International Roundtable of Household Appliance Manufacturer Associations) provides a platform to exchange information and opinions among industrial associations for the home electrical appliances.



Coordination in trade issues

JEMA works closely with the government for the establishment of Economic Partnership Agreements such as the FTA, EPA, RCEP as well as the WTO trade agreements (EGA, ITA and others), by integrating the opinions of the industrial sector. JEMA is also addressing various trade issues.

Range of products

Power and Industrial System Equipment

Boilers and turbines for power generation

Boilers, Steam turbines, Gas turbines, Water turbines, etc.

Motors and generators

AC generators, DC motors, AC motors, Servo motors, Small motors, Linear motors, etc.

Motor-driven devices

Electric tools, Electric hoists, Electric blowers, etc.

Stationary electrical machines

Transformers, Power converters, Inverters, Uninterruptible power systems, Electric welders, Electric furnaces, Reactors, Capacitors, Surge arresters, etc.

Switchgears & switchgear control systems

Gas insulated switchgears, Metal-enclosed switchgears, Distribution boards, Remote supervisory control equipment, Low voltage switchgears and controlgears, Programmable controllers, High voltage switches, Low voltage circuit breakers, High voltage circuit breakers, Protective relays, Electromagnetic clutches, etc

Nuclear Power Plant and Equipment

Nuclear power plants (including nuclear fusion facility) Accelerator systems

New and Renewable Energy Generation System and Equipment

Solar photovoltaic power generation systems Wind energy generation systems Fuel cell power systems, etc.

Manufacturers List by Products



High efficiency gas turbine



Remote supervisory controller for electric power system control station



Premium efficiency motor (Top runner motor) Servo motor



Electric tools



High efficiency transformer (Top runner transformer) Left:Oil-immersed type Right:Molded type



Inverter for general purpose



550kV gas insulated switchgear



Programmable controller



Nuclear power plant (Sendai Nuclear Power Station)



Photovoltaic power generation system (Shiga, Yabasekihantou mega solar power plant)



Wind energy generation system (Eurus Date Kogane Wind Farm)



Power conditioning system



Fuel cell system

Home Electrical Appliances

Living environment and cooling / heating related equipment

Room air conditioners, Vacuum cleaners, Ventilating fans, Bathroom dryer fan, Fans, Air purifiers, Electric space heaters, Electric hot heating fans, Carpet-type heaters, Humidifiers, Water storage heaters, Toilet seats with washers or seat heats, Well pumps, Small pumps, Dehumidifiers, etc.



Room air conditioner

Vacuum cleaner



Bathroom dryer fan



Fan



Air purifier



Electric stove

Kitchen devices

Refrigerators, Freezers, Microwave ovens, Rice cookers, IH cooking heaters, Combined juicers and blenders, Electric pots, Coffee makers, Toasters, Dishwashers, Bread machines, Electric griddles, Home raw garbage processing equipment, etc.



Refrigerator



Microwave oven



Rice cooker & warmer



Freezer



IH cooking heater



Electric Pot



Toaster



Dishwasher

Home laundry equipment

Washing machines, Clothes dryers, Futon dryers, Irons, etc.



Washer & dryer



* Image of the menu of refrigerator App

Electrical personal appliances

Shavers, Hair clippers, Massagers, Depilators, Electric toothbrushes, Hair dryers, etc.



Electric toothbrush



Shaver



Hair dryer

Connected / Smart home appliances

Board of Directors

Chairman
Taro SHIMADA
Toshiba Corporation
Representative Executive Officer
President and Chief Executive Officer



Chairman
Taro Shimada

Executive Vice Chairman
Shiro KONDO
FUJI ELECTRIC CO., LTD.
Representative Director
Director and President
Chief Operating Officer

President
Manabu TAKAMOTO

Senior Vice President
Masaaki YAZA

Directors
Katsuhiko FURUYA
NICHICON CORPORATION Operating Officer
Hidenori GOTO
Nishishiba Electric Co., Ltd. Director, President and CEO

Shinichi HIRANO
SINFONIA TECHNOLOGY CO., LTD. President

Takashi ICHINOSE
TAKAOKA TOKO CO., LTD. President

Kazuo KOBAYASHI
Aichi Electric Co., Ltd. President

Takeshi MIIDA
MEDENSHA CORPORATION Representative Director, Chairperson and Senior Officer

Yoshiyuki MIYABE
Panasonic Holdings Corporation Director, Executive Vice President

Hiroshi OGASAWARA
YASKAWA Electric Corporation Representative Director, Chairman of the Board

Masahiro OKITSU
Sharp Corporation Executive Vice President

Yoshifumi OTSUBO
Toyo Electric Mfg. Co., Ltd. Director, Senior Executive Officer

Shigeo SAITO
NISSIN ELECTRIC Co., Ltd. Director

Tetsuya TAJIRI
DAIHEN Corporation Chairman

Noriyuki TAKAZAWA
MITSUBISHI ELECTRIC CORPORATION Senior Vice President

Shinichi TOGAMI
Togami Electric Mfg. Co., Ltd. President

Takumi TSUBOUCHI
FUJITSU GENERAL LIMITED Corporate Senior Vice President

Kenji URASE
Hitachi, Ltd. Vice President and Executive Officer

Shinzo YAMADA
Taiyo Electric Co., Ltd. Chairman

Motohiro YAMANISHI
OMRON Corporation Managing Executive Officer

Tomoharu YASUDA
Makita Corporation Corporate Officer

Tomohiko YOSHIDA
Koki Holdings Co., Ltd. Executive Officer

Auditors

Osami TSUKAMOTO
Yokohama National University Professor Emeritus

Yoshihide WATANABE
Osaki Electric Co., Ltd. Chairman and CEO

Shigeo YAMAMOTO
Sanjo Denki Co., Ltd. Representative Director, Chairman of the Board and Chief Executive Officer

Chairman of the Branches

(Osaka) Masato NISHIYAMA
OMRON Corporation Executive Officer

(Nagoya) Akitaka TEJIMA
NITTO KOGYO CORPORATION Director

(Kyushu) Hidetoshi SOEDA
SEIKO ELECTRIC CO., LTD. President and Representative Director

Members

Regular members
(180 Companies)

A Aichi Electric Co., Ltd.
Aisin Corporation

B BEMAC Corporation

D Daido Solderless Terminal Mfg. Co., Ltd.
DAIHEN Corporation
Daikin Industries, Ltd.
Daito Communication Apparatus Co., Ltd.
Danrey Kogyo Co., Ltd.
DENSO Corporation
Denyo Co., Ltd.
DIAMOND & ZEBRA ELECTRIC MFG. CO., LTD.

E ELIY Power Co., Ltd.
Energy Support Corporation
Energywith Co., Ltd.

F Fuji Electric Co., Ltd.
Fuji Electric FA Components & Systems Co., Ltd.
Fuji Grinding Wheel Mfg. Co., Ltd.
Fuji Logistics Co., Ltd.
Fuji Terminal Industry Co., Ltd.
Fujitsu General Limited.

G GS Yuasa International Ltd.
GS Yuasa Technology Ltd.

H Haier Asia R&D Co., Ltd.
Hikari Trading Co., Ltd.
Hitachi, Ltd.
Hitachi-GE Nuclear Energy, Ltd.
Hitachi Global Life Solutions, Inc.
Hitachi Industrial Equipment Systems Co., Ltd.
Hitachi Industrial Products, Ltd.
Hitachi Plant Construction, Ltd.
Hitachi Power Solutions Co., Ltd.
Hitachi Zosen Corporation
Hokuetsu Industries Co., Ltd.
Hokuriku Electric Co., Ltd.
Honda Motor Co., Ltd.

I IBARAKI DENKI KOGYO CO., LTD.
IHI Corporation
IRIS OHYAMA INC.
ITOH DENKI CO., LTD.

J Japan Switch board & Control System Industries Association
Johnson Controls - Hitachi Air Conditioning
JRCS Mfg. Co., Ltd.
J.S.T.Mfg. Co., Ltd.

K K.C.C. Shokai, Limited
Kamiuchi Electric Works, Ltd.
Kaneka Corporation
Kansai Denki Kogyokai
Katsumata Electric Works Co., Ltd.
Kawaden Corporation
Kawamura Electric Inc.
Kawasaki Heavy Industries, Ltd.
Kitani Electric Company Limited
Kitashiba Electric Co., Ltd.
Kito Corporation
KODEN CO., LTD.
Koizumi Seiki Corporation
Koki Holdings Co., Ltd.
KOMAIHALTECH Inc.
Komatsu, Ltd.
Kuwahata Electric Mfg. Co., Ltd.
Kyocera Corporation

K KYOCERA Industrial Tools Corporation
Kyoritsu Denki Seisakusho Co., Ltd.
Kyoritsu Keiki Co., Ltd.
Kyuden Technosystems Corporation
KYUHEN Co., Inc.

L LIXIL Corporation
LOGISTEED, Ltd.

M Makita Corporation
MAX CO., LTD.
Maxell Izumi Co., Ltd.
Meidensha Corporation
METAWATER Co., Ltd.
METRO DENKI KOGYO CO., LTD.
Mitsubishi Electric Corporation
Mitsubishi Electric Engineering Co., Ltd.
Mitsubishi Electric FA Industrial Products Corporation
Mitsubishi Electric Home Appliance Co., Ltd.
Mitsubishi Electric Plant Engineering Corporation
Mitsubishi Electric Public Utility Equipment Corporation
Mitsubishi Electric System & Service Co., Ltd.
Mitsubishi Heavy Industries, Ltd.
Mitsubishi Heavy Industries Thermal Systems, Ltd.
Miyaki Electric Mfg. Co., Ltd.
Murata manufacturing Co, Ltd.

N NF Blossom Technologies, Inc.
NF HOLDINGS CORPORATION
NGK Insulators, Ltd.
NHV Corporation
Nichicon Corporation
Nichicon (Kusatsu) Corporation
Nichifu Terminal Industries Co., Ltd.
Nihon Itoic Co., Ltd.
Nikko Electric Mfg. Co., Ltd.
Nippon Denki Co., Ltd.
Nippon Denki Kenkyusho Co., Ltd.
Nippon Hoist Co., Ltd.
Nippon Kernel System Co., LTD.
Nipron Co., Ltd.
Nishimu Electronics Industries Co., Ltd.
Nishishiba Electric Co., Ltd.
Nissin Electric Co., Ltd.
NITTO Kogyo Corporation

O Ohatsu Co., Ltd.
OMRON Corporation
OMRON HEALTHCARE Co., Ltd.
OMRON SOCIAL SOLUTIONS CO., LTD.
Osaki Electric Co., Ltd.
Otowa Electric Co., Ltd.

P Panasonic Corporation
Panasonic Ecology Systems Co., Ltd.
Panasonic Entertainment & Communication Co., Ltd.
Panasonic Environmental Systems & Engineering Co., Ltd.
Panasonic Holdings Corporation
Panasonic Industry Co., Ltd.
Panasonic Operational Excellence Co., Ltd.
Panasonic Switchgear Systems Co., Ltd.

R Rinnai Corporation
Risho Kogyo Co., Ltd.

S San-Eisha, Ltd.
Sanka Kogyo Co., Ltd.
Sansha Electric Mfg. Co., Ltd.
Sanso Electric Co., Ltd.
Sanyo Denki Co., Ltd.

S Sawafuji Electric Co., Ltd.
SBS Toshiba Logistics Corporation
Seibu Electric & Machinery Co., Ltd.
Seiko Electric Co., Ltd.
Seikosha Mfg. Co., Ltd.
Sengoku Works, Ltd.
Sharp Corporation
SHARP ENERGY SOLUTIONS CORPORATION
SHIHEN TECHNICAL Corporation
Shimadzu Corporation
Shimomura Denyusha, Ltd.
Shindengen Electric Manufacturing Co., Ltd.
Shizuki Electric Co., Inc.
SHOWA DENKI CO., LTD.
SINFONIA ENGINEERING CO. LTD.
SINFONIA TECHNOLOGY CO., LTD.
SOC Corporation
Solar Frontier K.K.
Sumitomo Electric Industries, Ltd.
Sumitomo Heavy Industries, Ltd.
Suntech Power Japan Corporation

T Taiyo Electric Co., Ltd.
TAKAOKA TOKO CO., LTD.
TAKASU SANGYO., LTD.
TAMURA CORPORATION
Tempearl Industrial Co., Ltd.
Terasaki Electric Co., Ltd.
The Chugoku Electric Manufacturing Company, Incorporated
The Furukawa Battery Co., Ltd.
The Peacock Vacuum Bottle Co., Ltd.
Tiger Corporation
TODA CORPORATION
Togami Electric Mfg. Co., Ltd.
Tohoku Electric Mfg. Co., Ltd.
TOKYO DENSEI INDUSTRIAL CO., LTD.
Tokyo Electric Industry Co., Ltd.
Torishima Electric Works Ltd.
Toshiba Carrier Corporation
Toshiba Corporation
Toshiba Energy Systems & Solutions Corporation
Toshiba Home Technology Corporation
Toshiba Industrial Products and Systems Corporation
Toshiba Infrastructure Systems & Solutions Corporation
Toshiba IT & Control Systems Corporation
Toshiba Lifestyle Products & Services Corporation
Toshiba Mitsubishi-Electric Industrial Systems Corporation
Toshiba Schneider Inverter Corporation
TOTO Ltd.
Toyo Electric Mfg. Co., Ltd.
Toyo Hoist Mfg. Co., Ltd.

U Utsunomiya Electric Mfg. Co., Ltd.

Y YAMABIKO CORPORATION
YANMAR CONSTRUCTION EQUIPMENT CO., LTD.
Yaskawa Automation & Drives Corp.
YASKAWA Electric Corporation

Z Zojirushi Corporation

Supporting members
(105 Companies)

A AIR WATER MATERIALS INC.
Aqua Co., Ltd.
AUX Japan Co., Ltd.

B Bloom Energy Japan Ltd.
Bosch Corporation
Bosch Rexroth Corporation

C Canadian Solar Japan K.K.
Chemi-Con Yamagata Corporation
Chiyoda Kohan Co., LTD.
Chugai Electric Industrial Co., Ltd.
Cosmos Corporation

D Daiichi Electronics Co., Ltd.
DELTA ELECTRONICS (JAPAN), INC.
DELTA ENGINEERING CO, LTD.
Denkishizai Co., Ltd.
Dometic K.K.
Du Pont Specialty Products Kabushiki Kaisha
Dyson K.K.

E Eaton Electric (JAPAN) Ltd.
Electrolux (Japan) Limited
EPLAN Software & Services K.K.

F FDK CORPORATION
FUJI FURUKAWA ENGINEERING & CONSTRUCTION Co., Ltd.
FUJI INDUSTRIAL SALES Co., Ltd.
Fujitsu Limited

G Global Nuclear Fuel-Japan Co., Ltd.
G-Place Corporation
Groupe SEB Japan Co., Ltd.

H Haier Japan Holdings Co., Ltd.
Haier Japan Sales Co., Ltd.
Hanwha Japan Co., LTD.
HARMAN Co., Ltd.
Hilti (Japan), Ltd.
HISENSE JAPAN CORPORATION
Hitachi Building Systems Co., Ltd.
Hitachi Industry & Control Solutions, Ltd.
Hoei Denki Co., Ltd.
Huawei Technologies Japan K.K.
Hyoda Instruments Corporation

I ICAN COMPANY LTD.
Inaba Denki Sangyo Co., Ltd.

J Jackery Japan Co., Ltd.
Japan Audit and Certification Organization for Environment and Quality
Japan Copper Development Association
Japan Marine United Corporation
JAPAN TABACCO INC.
JA Solar Japan Limited
JFE Electrical Steel Co., Ltd.
JFE Steel Corporation
JGC HOLDINGS CORPORATION
Jin and Marry CO., Ltd.
Jinko Solar Holding Co., Ltd.
JUST Co., Ltd.

K Kanken Techno Co., Ltd.
KEC CORPORATION
KYODO KY-TEC CORP.

L LG Electronics Japan Inc.
LONGi Solar Technology K. K.

M Meiden Shoji Co., Ltd.
Midea Japan Corporation
Miele Japan Corp.
MITSUBISHI ELECTRIC BUILDING SOLUTIONS CO., LTD.
MORITANI & Co., Ltd.
MR Japan Corporation

N NEC Corporation
Nestle Nespresso K.K.
NICHIDEN Corporation
NIPPON STEEL CORPORATION
Nippon Tungsten Co., Ltd.
N.TEC Co., Ltd.

O Ono Sokki Co., Ltd.

P P & G Japan G.K.
Philips Electronics Japan, Ltd.
Proterial, Ltd.

R RITTAL K.K.
ROHM Co., Ltd.
Ryoden Trading Co., Ltd.

S Samsung R&D institute Japan Co. LTD.
Sanshin Electric Corporation
Sanyo Kogyo Co., Ltd.
Saraya Co., LTD
Schneider Electric Japan Inc.
Seino Holdings Co., Ltd.
Sekisui Chemical Co., Ltd.
SMA Japan K.K.
SolarEdge Technologies (Japan) Co., Ltd.
Sony Global Manufacturing & Operations Corporation
SUGAHARA Co., Ltd.
Sungrow Japan K.K.

T Takara Standard Co., Ltd.
Takigen Mfg. Co., Ltd.
TCL JAPAN ELECTRONICS Co., Ltd.
TECO JAPAN (Sankyo Co., Ltd.)
TOKYO GAS CO., LTD.
TOYOTA INDUSTRIES CORPORATION
Toyota Tsusho Corporation
Trina Solar (JAPAN) Limited
Tsunashima & Co., Ltd.
TÜV Rheinland Japan Ltd.
TÜV SÜD Japan Ltd.
Tuya Japan Co., Ltd.

W WADA ELECTRICAL INSTALLATION LTD.
Wind Energy Institute of Tokyo, Inc.

Y Yingli Green Energy Japan Co., Ltd.
YOSHII ELECTRIC CO., LTD.

Latest members information can be found at
www.jema-net.or.jp/English/members/

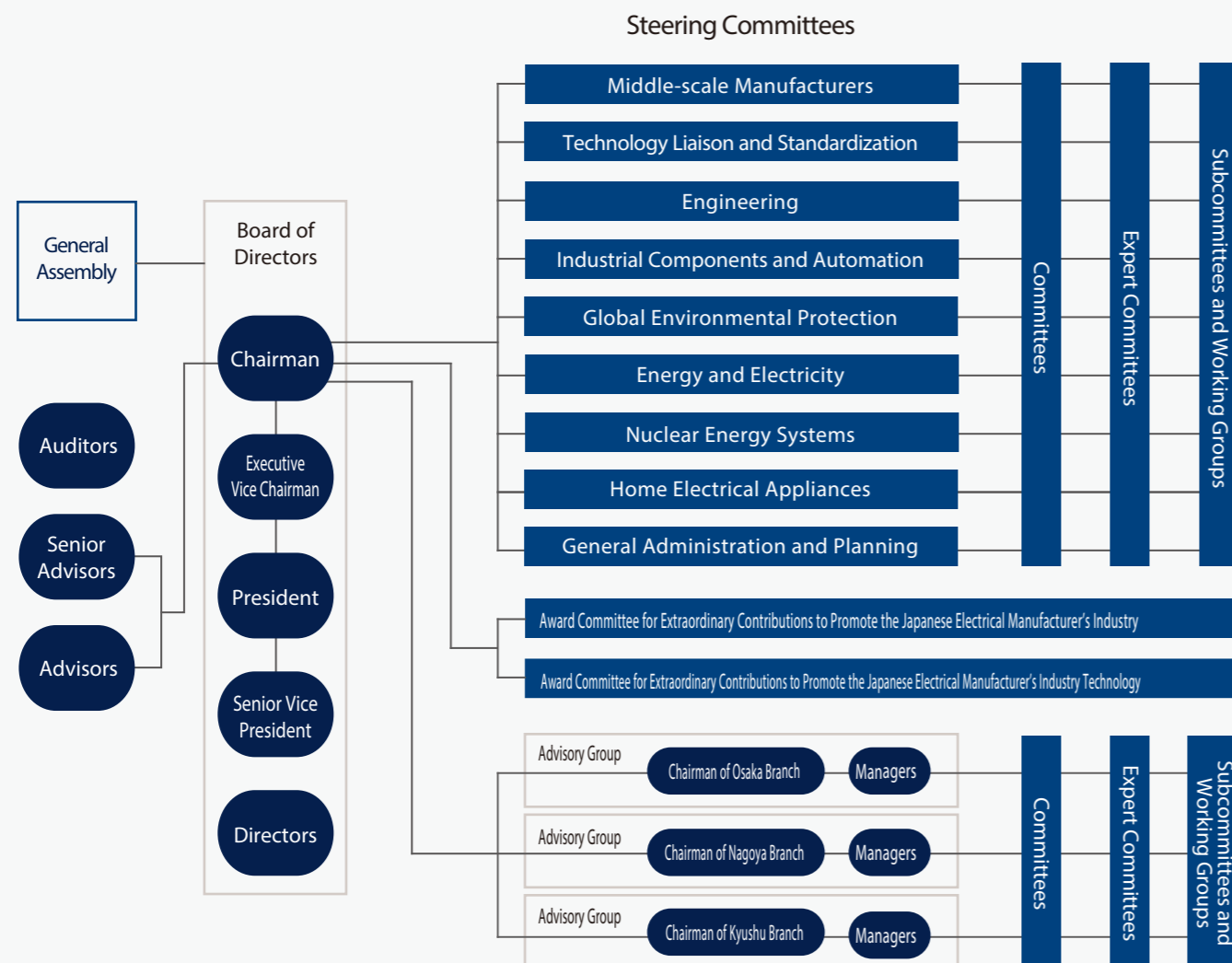


Organization

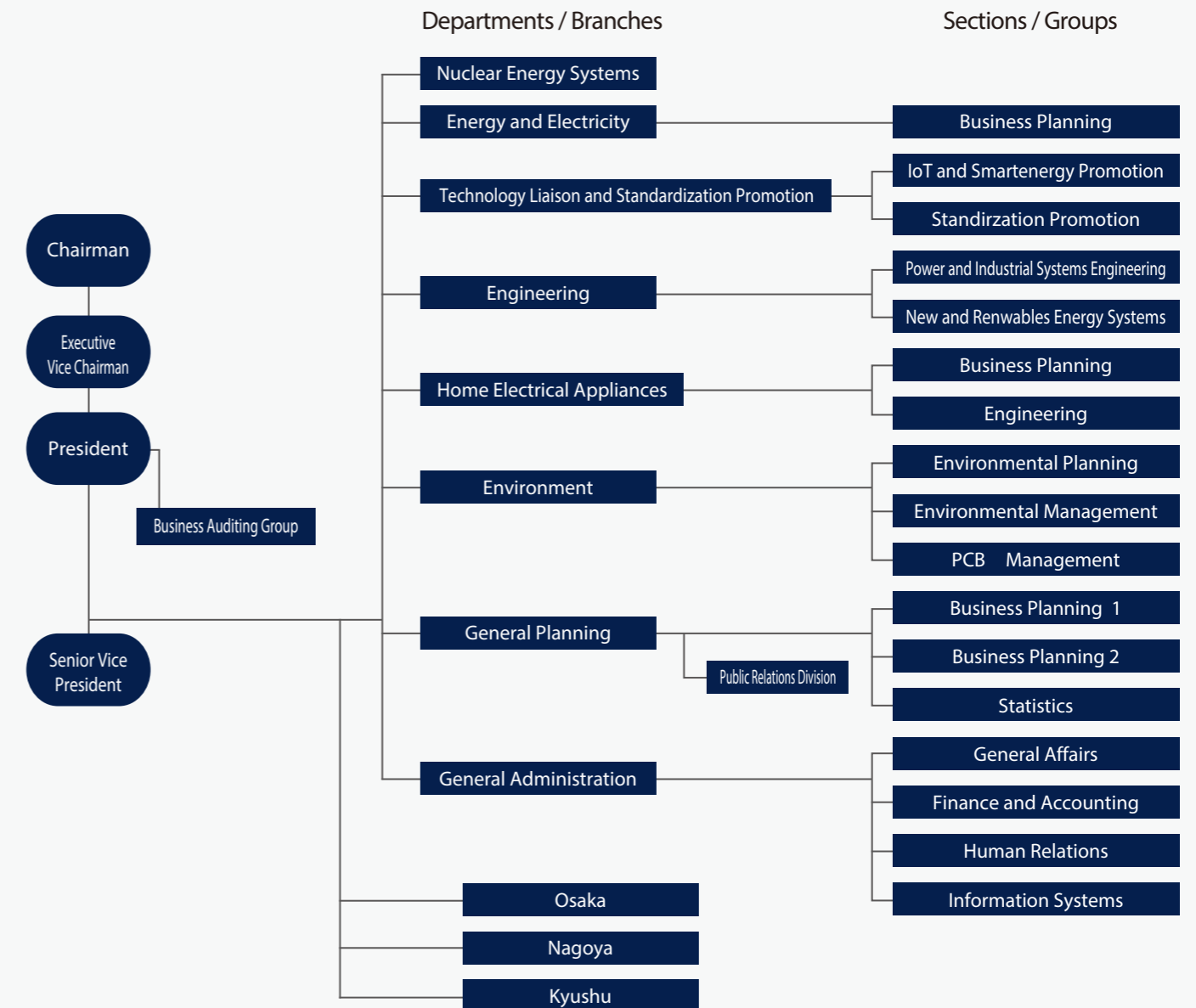
In order to conduct its business, JEMA has a wide range of committees that deal with many different fields, including the following;

- Committees related to products for heavy electrical industry, industrial systems and equipment, home electrical appliances, nuclear power and new and renewable energy sources
- Committees for areas of concern that include all industries, such as the environment and technology
- Committees for medium-sized companies and the financial aspects of corporate management

The committees are headed by steering committees, and there are various committees, expert committees, subcommittees, and working groups. Regular members can participate in committees related to the products they handle.



JEMA Secretariat



Head Office

17-4 Ichiban-cho Chiyoda-ku Tokyo 102-0082



	Phone	Fax
Nuclear Energy Systems	+81-3-3556-5886	+81-3-3556-5890
Energy and Electricity	+81-3-3556-5885	+81-3-3556-5890
Technology Liaison and Standardization Promotion	+81-3-3556-5888	+81-3-3556-5892
Engineering	+81-3-3556-5884	+81-3-3556-5890
Home Electrical Appliances	+81-3-3556-5887	+81-3-3556-5891
Environment	+81-3-3556-5883	+81-3-3556-5891
General Planning	+81-3-3556-5882	+81-3-3556-5892
General Administration	+81-3-3556-5881	+81-3-3556-5889

Osaka

Chuo Denki Club 4th Fl
1-25 Dojimahama 2-chome Kita-ku
Osaka 530-0004
Phone +81-6-6344-1061 Fax +81-6-6344-1837

Nagoya

Nagoya Shokokaigisyo Bldg. 6th Fl
10-19 Sakae 2-chome Naka-ku
Nagoya 460-0008
Phone +81-52-231-5211 Fax +81-52-231-5610

Kyushu

Denki Bldg. North 10th Fl
1-82 Watanabedori 2-chome Chuo-ku
Fukuoka 810-0004
Phone +81-92-761-4778 Fax +81-92-751-2094

Joining JEMA

Categories of Membership

Regular Membership

A corporate entity involved in the manufacture and/or relevant businesses of electrical machinery and/or equipment in Japan, or an entity or organization consisting of these.

Supporting Membership

An entity or organization that does not qualify for regular membership but agrees with the goals of JEMA and will cooperate with JEMA projects.

Membership Privileges

Participation in JEMA committees (Regular membership only)

Regular members can participate in committees related to the products they handle.

Acquisition of the latest information on the Japanese electrical industry through

- IIFES (an every-other-year organized international exhibition for FA related control technology and equipment),
- JEMA lectures, seminars, and industry exchange meetings,
- Information from governmental agencies,
- JEM standards, technical reports, JEMA statistics with membership prices
- JEMA bulletin DENKI and JEMA annual report,
- Access to members-only portal

For more information on JEMA membership please contact us through Contact Form at www.jema-net.or.jp/cgi-bin/contact_english/input.cgi



Access to Head Office

- Tokyo Metro Hanzomon Line
Hanzomon station (Z05) Exit 4
3 minutes walk
- Tokyo Metro Yurakucho Line
Kojimachi station (Y15) Exit 3
7 minutes walk

